

# GUIDE TO PROPER WASTE SEPARATION



IN ENGLISH



Daily Sustainable

# Why waste separation is explained in different languages

## CEM IS NOW FOR EVERYONE!

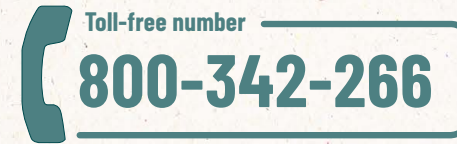
To reach all those living in the municipalities where CEM operates, we have explained waste collection in six languages: Italian, English, French, Spanish, Chinese, and Arabic.

The main guidelines on waste collection are now also available to those living in foreign communities.

The translated information concerns the main door-to-door collections managed by CEM, but also the rules of the Collection Centers (formerly Ecological Platforms) and the street cleaning service. The goal we have set is to reach everyone, each in the language he or she knows best, with the aim of increasingly improving separate collection and the spreading of good environmental practices in our municipalities.

## CONTACT CHANNELS

The new toll-free toll-free number to use is



MONDAY TO FRIDAY: 9 A.M. - 12:30 P.M. and 2:30 P.M. - 5 P.M.  
SATURDAY: 9 A.M. - 12 P.M.

The new Web site to visit is

[www.cemambiente.it](http://www.cemambiente.it)

To find plenty of useful information and clear your doubts about waste collection thanks to the **WHERE DO I THROW IT?**

download free and consult

**CEMAMBIENTE APP** with all the information and the **SEARCH** function to know how to separate every kind of waste



For general info write to

[info@cemambiente.it](mailto:info@cemambiente.it)



DRY

# Undifferentiated

Undifferentiated, or dry waste, is that part of the waste that cannot be separated and is disposed of by waste-to-energy.

The goal is to make the amount of dry waste smaller and smaller. Therefore, it is necessary to be very careful about what we throw away.

**YES** ✓

**Insert:**

- TOOTHBRUSHES
- DISPOSABLE RAZORS
- CLOTHES
- SANITARY NAPKINS
- VACUUM CLEANER BAGS
- PET LITTERS
- PLASTIC COFFEE PODS
- X-RAYS
- PLASTIC CUTLERY
- CDS/DVDS
- TIGHTS
- FOOD PAPER
- BAKING PAPER
- RECEIPTS

**NO** ✗

**Do not insert:**

- GLASS PACKAGING
- CANS AND PLASTIC
- TETRA PAK
- PAPER AND CARDBOARD
- ORGANIC

**Use the specific separate collections for these wastes.**

**HOW?**

**Collection**

in semi-transparent plastic bags, (preferably semi-transparent gray)  
To be displayed on the ground.



ORGANIC

# ORGANIC

The recovery of organic waste follows nature's cycle: it can be used for home composting or collected for disposal. In the latter case, it is then taken to plants that will turn it into compost or use it to produce biogas or other types of alternative energy.

**YES** ✓

**Insert:**

- ORGANIC MATERIAL
- FOOD SCRAPS AND LEFTOVERS
- SPOILED FOODS
- COFFEE GROUNDS AND PAPER CAPSULES
- TEA FILTERS
- EGGSHELLS, DRIED FRUIT AND SHELLFISH SHELLS
- SMALL CUT FLOWERS AND PLANTS
- CORKS
- WHITE NAPKINS AND PAPER TOWELS
- BIODEGRADABLE AND COMPOSTABLE TABLEWARE AND PRODUCTS
- ASHES FROM FIREPLACES

**NO** ✗

**Do not insert:**

Non-biodegradable waste such as

- PLASTIC BAGS
- CLOTHES
- ALUMINIUM
- PRUNINGS AND GRASS (which should be taken to your Collection Center or Ecological Platform or collected at home)

**HOW?**

**COLLECTED IN WHEELED GRAY BINS (UNI EN 840 COMPLIANT).**

**Use only paper or Mater-bi bags and not plastic bags.**

# DOOR-TO-DOOR COLLECTION



## PLASTIC

# Plastic

In the plastic collection only **PLASTIC** packaging is collected (bottles, trays, tubes....)

This waste is then processed and recycled as a secondary material to produce new items.

## YES ✓

**PLASTIC PACKAGES, PACKETS, TRAYS FOR:**  
FOOD - FROZEN FOODS - CLOTHING - GARDENING

**PLASTIC BOTTLES, CANS, JARS, BOTTLES FOR:**  
- LIQUIDS - OIL - BEVERAGES - MILK - JUICES  
- YOGURT - PET FOOD - SOAPS - DETERGENTS -  
DEODORANT SPRAYS

**AND MORE...**  
TOOTHPASTE AND CREAM TUBES - EMPTY BLISTER  
PACKS OF MEDICINES - EMPTY BLISTERS OF  
BATTERIES - EMPTY BLISTERS OF STATIONERY -  
PLASTIC EGG CUPS - SMALL POLYSTYRENE PACKAGING  
- PE, PET, PVC, PP, PS, ABS CONTAINERS - PLASTIC  
FILMS - PLASTIC PLATES AND CUPS - AIR BUBBLES  
AND PACKING CHIPS - FRUIT AND VEGETABLE NETS -  
PLASTIC HANGERS - PLASTIC VASES

## NO ✗

**Do not insert :**  
BEVERAGE CARTONS  
(SUCH AS TETRA  
PAK) - PAINT AND  
SOLVENT CONTAINERS  
LABELED T/F - LARGE  
POLYSTYRENE  
AND CELLOPHANE  
CONTAINERS OR IN  
LARGE QUANTITIES  
- TONERS AND  
BATTERIES (MUST  
BE TAKEN TO THE  
COLLECTION CENTER)

**These wastes should  
be taken to the  
Collection Center of  
your municipality.**

Here are other  
examples of  
waste that  
**DOES NOT  
GO** in the  
Multipak bag:



**CLOTHES, SHOES,  
SLIPPERS, FABRICS**



**BUCKETS  
AND BASINS**



**ALUMINUM AND  
PLASTIC KITCHEN  
UTENSILS AND TOOLS**



**BAGS WITH MIXED  
WASTE**



**PLASTIC TOYS  
AND COSTUME  
JEWELRY**



**PAPER AND CARDBOARD**



**FOOD**



**MASKS**

## HOW?

**COLLECTION IN  
SEMI-TRANSPARENT  
BAGS PREFERABLY  
YELLOW TO BE  
DISPLAYED ON THE  
GROUND**



GLASS AND CAN

# Glass and can

Glass and can collection includes glass, aluminum and steel packaging.  
The collected glass, aluminum and steel can be recycled infinite times to create new containers and new items.

## YES ✓

**Insert:**  
WHITE AND STAINED **GLASS BOTTLES** AND GLASS JARS,

**ALUMINUM AND METAL BOTTLES, CANS AND JARS FOR:** LIQUIDS - OIL - BEVERAGES - PET FOODS, DEODORANT SPRAY

**AND THEN... ALUMINUM FOOD TRAYS AN**  
- ALUMINUM FOIL -  
ALUMINUM HANGERS -  
ALUMINUM COFFEE CAPS  
- METAL CAPS.

Empty the contents from these wastes.

## NO ✗

**Do not insert:**  
CUPS, PLATES, CERAMIC/PORCELAIN/CLAY VASES - NEON LAMPS AND BLUMBS (MUST BE TAKEN TO THE COLLECTION CENTER)

## HOW?

**COLLECTION IN GREEN WHEELED BINS (UNI EN 840 STANDARD).**

**Do not insert plastic bags or sacks!**



PAPER

# Paper and cardboard

All salvaged paper and cardboard become new types of recycled paper and cardboard. Paper recycling can be repeated between 5 and 7 times. To optimize collection, it is best to flatten boxes to reduce volume.

**ATTENTION: beverage cartons (such as TETRA PAK) should be placed in the PAPER collection**

## YES ✓

**Insert:**  
NEWSPAPERS AND MAGAZINES - SHEETS OF PAPER AND NOTEBOOKS - PAPER BAGS - BOOKS - CARDBOARDS - PIZZA BOXES (WITHOUT LEFTOVERS) - SMALL CARDBOARD PACKAGING REDUCED IN VOLUME - PURE CELLULOSE PAPER TOWELS - BUS/TRAIN TICKETS

**Insert: BEVERAGE CARTONS (TETRA PAK TYPE) MILK AND JUICE.**

## NO ✗

**Do not insert:**  
- RECEIPTS  
- FOOD PAPER  
- BAKING PAPER (to be placed in the unsorted waste bag)

## HOW?

**COLLECTION IN BUCKETS WITH LID AND HANDLE OR WHITE WHEELED BINS (UNI EN 840 STANDARD) OR IN PAPER BAGS, DISPOSABLE CARTONS OR TIED PACKAGES (MAX 20KG).**

**Never use plastic bags.**



# Greenery

Collected greenery is a very valuable waste; it is taken to the composting plant and turned into compost, which is useful for fertilizing gardens and vegetable gardens.

## GREENERY

### YES ✓

Insert:

- GRASS CUTTINGS
- PRUNINGS
- LEAVES
- GARDEN PLANTS

### NO ✗

Do not include other waste such as:

- PLASTICS
- METAL
- STONES
- SOIL
- LARGE DIAMETER BRANCHES

### HOW?

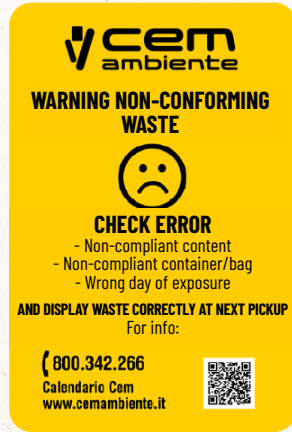
**HOME COLLECTION ONLY IN BROWN WHEELED BINS (UNI EN 840 STANDARD) OR IN BUNDLES (MAX 20KG AND 120 CM MAXIMUM LENGTH) Waste displayed in other bins will not be collected.**

If the prunings are bulky compared to the bin they can be displayed in bundles (maximum 4). Bundles weighing a maximum of 20kg each should be tied with natural twine.

# Waste non-compliance

If the waste displayed is incorrect, the non-compliance sticker is applied and the waste is not picked up by the operator.

**WARNING: In case of non-compliance, the waste must be picked up and properly displayed the following week.**



## MOST FREQUENT ERRORS

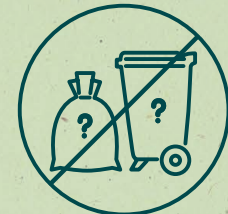
### NON-COMPLIANT CONTENT

The contents of the bag or bin are not correct



### NON-COMPLIANT CONTAINER OR BAG

The type of waste collector being used is incorrect



### INCORRECT DAY OF DISPLAY

The waste was displayed on a different day than the day on the calendar



## COLLECTION CENTER/FORMER ECOLOGICAL PLATFORM



The **Collection Center (Former Ecological Platform)** is an equipped and guarded area where citizens can bring **waste that is not collected through door-to-door service**.

### HOW TO ENTER

Take waste to the Collection Centers (formerly ecological platforms). Yes, great way to do some housekeeping. But then you find yourself in front of the gate wondering: but how do you get in?

The rules are simple:

\* **Residents who pay the TARI** because they own a home, must use their **Regional/National Health Card (CRS/CNS)** to enter the collection center.

\* **Business owners or property owners** who do not live on this property, must have a **permit given by the City Hall Environmental Hygiene Office**.

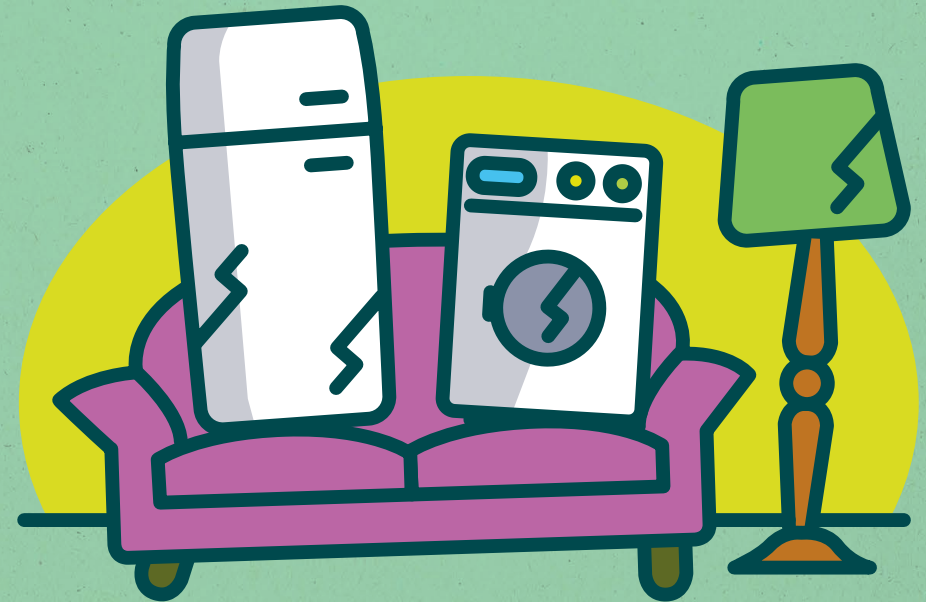
As for **information about the Collection Center** (opening hours and days) is concerned, you can find everything in the collection calendar that CEM delivers at the beginning of the year or that you can download online from **www.cemambiente.it**.

All useful info can also be found on the **CEM Ambiente App**.

### WHAT CAN YOU BRING?

BULKY WASTE - PLANT WASTE FROM GARDENING - WOOD - FERROUS SCRAPS - PAPER AND CARDBOARD - BULKY STYROFOAM - RUBBLE AND AGGREGATES - GLASS IN SHEETS - WEEE (HOUSEHOLD APPLIANCES, TVS AND MONITORS, LAMPS AND LIGHT BULBS), PAINTS, AEROSOL CANS, PRINTER TONERS, VEGETABLE AND ANIMAL OILS AND FATS, LUBRICATING OILS, BATTERIES AND BATTERIES.

# Bulky "guests"?



## CEM Ambiente will get rid of them for you!

### NEW! BULKY WASTE HOME PICKUP SERVICE EXPANDS AND GROWS IN THE AREA

The bulky waste pickup service managed by CEM Ambiente is active in the **69 member municipalities**, that have subscribed to it (excluding the municipalities of Aicurzio, Inzago and Comazzo, which manage the service independently). Each user is entitled to 2 pickup services per year by **booking them** at the **CEM Ambiente toll-free number**. Bulky items must be left at the roadside on the agreed days and modalities.

✓ **Bulky items are:** mattresses, bed frames, furniture already disassembled, large household appliances, sofas, armchairs, doors, blinds, WEEE waste (television sets, monitors, computers, printers...)

✗ **The following are NOT considered bulky** (and therefore will not be picked up): rubble, drywall, tires, hazardous waste (paint, motor oil, car batteries, toner, chemicals, asbestos sheets...), liquid waste (vegetable oil), canisters, vegetable waste (brushwood...), bituminous sheaths, fire extinguishers, bags or other with undifferentiated waste, waste that is already part of door-to-door collection (paper, plastic, glass...)

[www.cemambiente.it/ingombranti](http://www.cemambiente.it/ingombranti)



**BULKY WASTE COLLECTION**

Toll-free number  
**800-342-266**



Daily Sustainable

# Why separate waste collection?

## QUALITY OVER QUANTITY

**Separate waste collection is a duty of every responsible citizen** but it is also an obligation required by law (DIs 152/2006 and subsequent amendments).

**Numerous benefits** are obtained from separate waste collection.



Making separate waste collection a good daily habit is the duty of every citizen.

Without forgetting that, nowadays, it is no longer just a matter of quantity of waste recovered but also and above all of the quality of the waste.

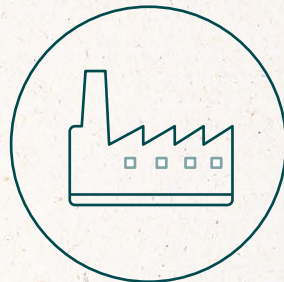
**Here are the main benefits of good separate waste collection**



Waste collected separately and recycled **turns back into "raw" materials** ready to be **processed and reused**.



The virtuous waste cycle allows for **more efficient use of resources** meaning energy and water.



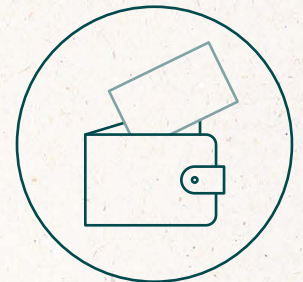
Efficient household waste collection makes it possible to **reduce the amount of waste taken to waste-to-energy plants**.



Compliance with collection rules also results in **reduced greenhouse gas emissions**.



Municipalities that collect more and better are also rewarded by the various consortia with **economic incentives**.



Thanks to good separate collection it is also possible to **contain the overall cost the waste disposal service**.



# Do the right thing

## SOME RULES TO REMEMBER



Follow all the directions on the Calendar **for proper recycling collection.**



Sort your waste well before taking it to the **Collection Center.**



Respect the **rules** of the **Collection Center**: do not rummage or pick up materials.



Respect parking bans for **street washing.**



Use **street bins** only for small waste.



Do not **abandon anything on the streets.** Illegal dumping is a cost to the community.

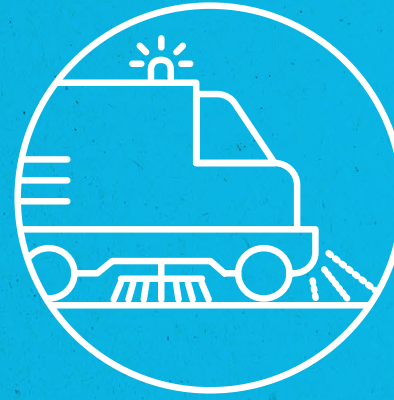


**Don't throw** cigarette butts, chewing gum, wrappers, cans or other small trash on the ground.



Always pick up your **dog waste** with the appropriate tools.

## CITY CLEANING



# Street cleaning

### Not only waste collection.

CEM Ambiente, in fact, also takes care of the cleaning services in its municipalities with its **street cleaning service.**

Thanks to this activity, the dirt collected during the cleaning of city streets is taken to the treatment plant in Liscate (MI) where a large part of the collected materials, about **98 %** (2022 figure), **returns to use**, mostly as gravel that can be used in the construction industry.

Street cleaning is a service that is carried out by CEM Ambiente through the use of increasingly **environmentally friendly and sustainable vehicles**: electric **blowers** with **reduced noise and environmental impact** and the new **Euro6 vacuum sweepers.**

